

3. To be eligible for funding, the proposed project must be within the MSP area. In which Management Unit is the project located? (Attach a map)

The project is located on the Lusardi Creek Preserve within Management Unit 6 (MU6) in the western portion of the MSPA (Figure 1). Figure 2 depicts the project location relative to the closest known occurrence of thread-leaved brodiaea.

Figure 1: Project Location in MU6 of the MSPA

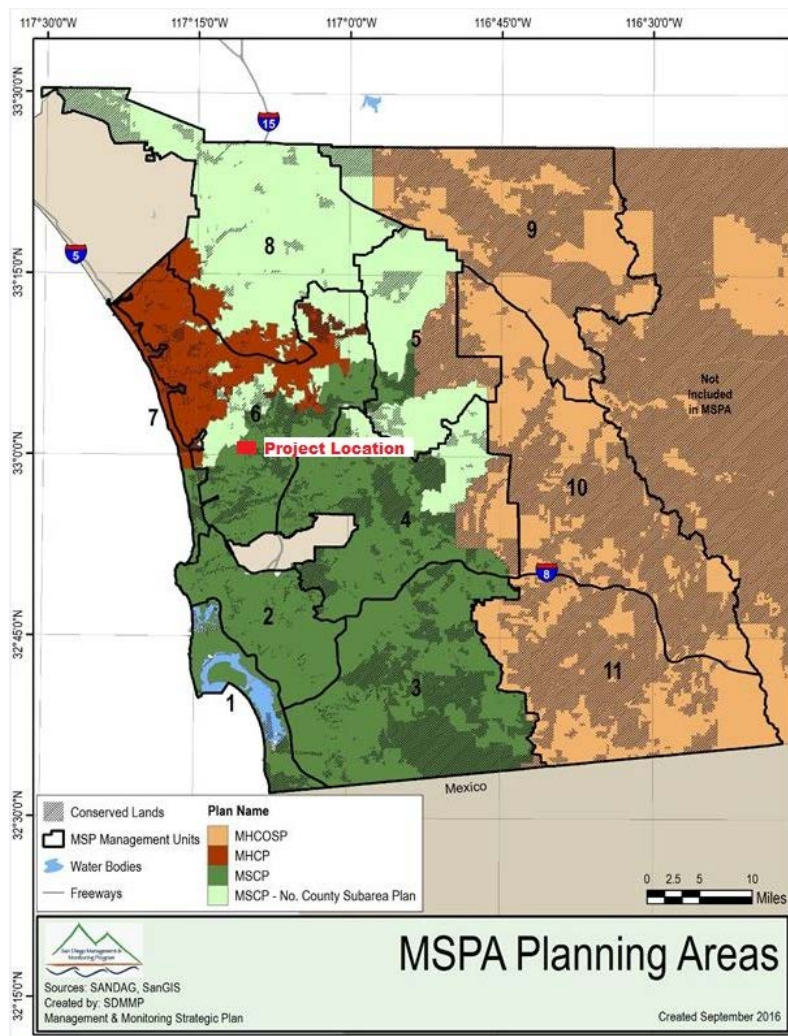
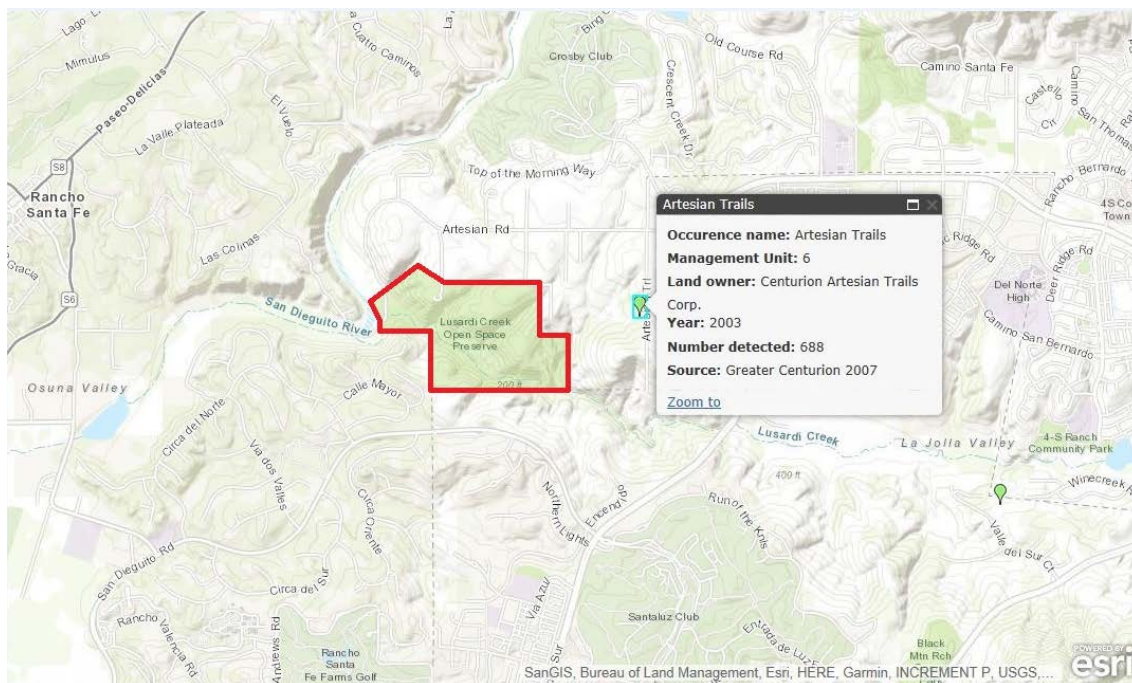


Figure 2: Project Location in MU6, Relative to the Nearest Thread-leaved Brodiaea Occurrence (0.4 mile)



4. Describe the stressors and/or threats to the MSP species and their habitats in the project area that will be addressed through implementation of this project proposal.

Although there are currently no populations of thread-leaved brodiaea on the Lusardi Creek Preserve, there are potential threats and stressors on the preserve that could affect thread-leaved brodiaea and the success of the project. These include herbivory, human uses of the preserve, and competition from encroaching weedy or invasive plants. The Translocation, Propagation and Management Plan (Task 1) will include detailed instructions for the management, maintenance and protection of thread-leaved brodiaea onsite. These may include, but are not limited to, fencing, signage or protective chicken wire cages around each plant. Weed eradication will be conducted as necessary to minimize competition that could prevent the successful establishment of the translocated brodiaea. Concurrently, threats and